



## Series EVS/EVT Electric Actuators

For Use with All Sizes of Ball and Butterfly Valves



### *The Best Choice Overall*

This is the electric actuator that can do it all. There's a model to work with every size of Hayward Ball and Butterfly Valve in both on/off and modulating applications. A complete set of options allows the actuator to be configured to meet virtually any application specification.

### *Modular Design*

Hayward EVS/EVT Actuators have been designed with a circuit board that readily accepts plug-in connectors. There is no hard wiring to fail or tangle with during installation. The motor, limit switches and other accessories simply plug into the circuit board. Other than wiring connected to the terminal strip on the circuit board, there is absolutely no other internal wiring.

### *Advance Design Features*

Gold-plated electrical connectors assure precise, positive contact and resist internal corrosion and condensation. The efficient spur gear drive train is supported by needle bearings which make it very secure – while eliminating the potential for side loading of the output shaft. There is an EVS/EVT Actuator with a split-phase reversing motor that produces just the right torque to operate every Hayward Ball or Butterfly Valve. You never have to pay for more actuator than you need.

### *Features*

- Multi Option Availability
- Gold Plated Connectors
- Modular Internal Construction
- Easy Options Add-On
- Manual Override
- Position Indicator
- UL Listed Motor
- Nema 4X Housing
- Permanent Lubrication
- 115 VAC Operation

### *Options*

- Limit Switches
- Positioners
- Voltages
- Fail Safe Operation
- Feedback Potentiometer
- Extended Duty Motor
- Heater & Thermostat
- Mechanical Brake
- CSA Certification
- Nema 4, 7, & 9 Housing

### *Fail Safe Option*

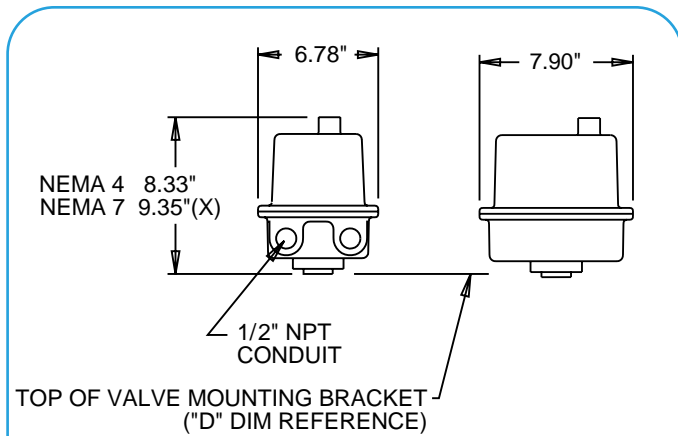
This option provides for the opening or closing of the the valve in the event of power failure. A "daughter board" with a battery pack will provide power for up to 10 cycles in the event of power loss.

# Technical Information

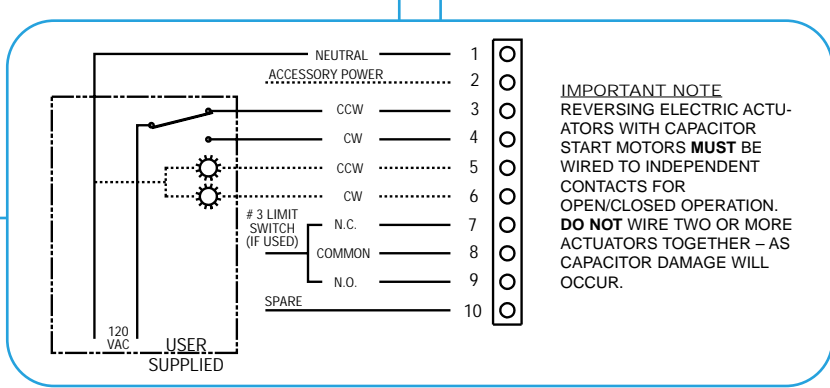
## Actuator Specifications

<b>Housing:</b>	Epoxy-Coated Aluminum	<b>Voltage:</b>	120 VAC
<b>Conduit Size:</b>	1/2"	<b>Enclosure:</b>	NEMA 4X
<b>Duty Cycle:</b>	25%	<b>Mechanical Brake:</b>	Standard for Butterfly Valve
<b>Thermal Overload:</b>	Standard	<b>Operation:</b>	Reversing
<b>Cycle Time:</b>	5 to 45 seconds, depending on model	<b>Motor:</b>	UL Approved
<b>Base:</b>	Epoxy-Coated Aluminum		

## EVS Series Dimensions / Schematic

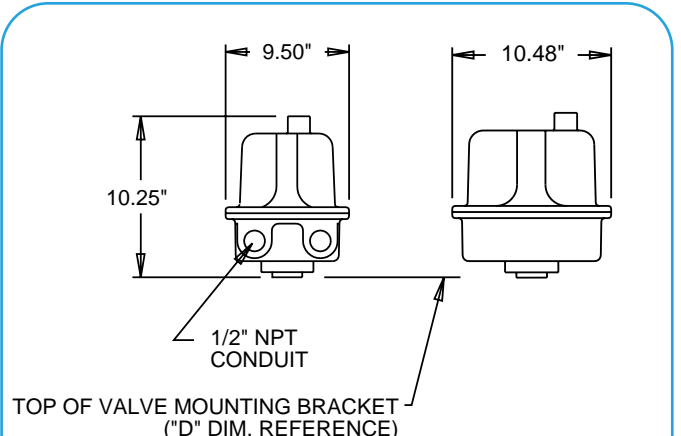


Torque Output (in-lb) Start/Stall	
Model	Torque
EVS2	150/180
EVS3	300/360
EVS6	600/720



Torque Output (in-lb) Start/Stall	
Model	Torque
EVT10	1000/1200
EVT20	2000/2400
EVT30	3000/3600

## EVT Series Dimensions / Schematic



## Ball Valve Selection Chart

Valve Size	True Union Ball Valve *	Three-Way Ball Valve *
1/2" to 2"	EVS2	EVS2
2-1/2" to 3"	EVS3	EVS3
4" to 6"	EVS3	EVS6

\* Actuator size selections based on clean water at 70°F.

## Butterfly Valve Selection Chart

Valve Size	Butterfly Valve *
1-1/2" to 3"	EVS3K
4"	EVS6K
6" to 8"	EVT10K
10"	EVT20K
12"	EVT30K

\* Actuator size selections based on clean water at 70°F.



Hayward Industrial Products, Inc.

One Hayward Industrial Drive, Clemmons, NC 27012  
 Tel: 1-888-429-4635 (1-888-HAYINDL) • Fax: 1-888-778-8410  
 E-mail: industrial@haywardnet.com  
 Web Site: http://www.haywardindustrial.com

Hayward Industrial Products Canada Inc.

2880 Plymouth Drive, Oakville, Ontario L6H 5R4  
 Tel: 905 829-2880 • Fax: 905 829-3636

Hayward Industrial Products (UK) Ltd.

Unit 2, Crowngate, Wyncolls Road, Colchester, Essex C04 4HT  
 Tel: 441-206-854454 • Fax: 441-206-851240